

## ERRATUM

Kenneth L. Stevens has requested the following erratum: For the paper entitled "Structure of Chlororepdiolide, A New Sesquiterpene Lactone from *Centaurea repens*," *J. Nat. Prod.*, **49**, 833 (1986), the SHELXTL program used to determine the structure of chlororepdiolide was a pre-release version (version 3.0) and contained a "bug". This has now been corrected and the structure re-calculated with version 4.1. The corrected figures are as follows:

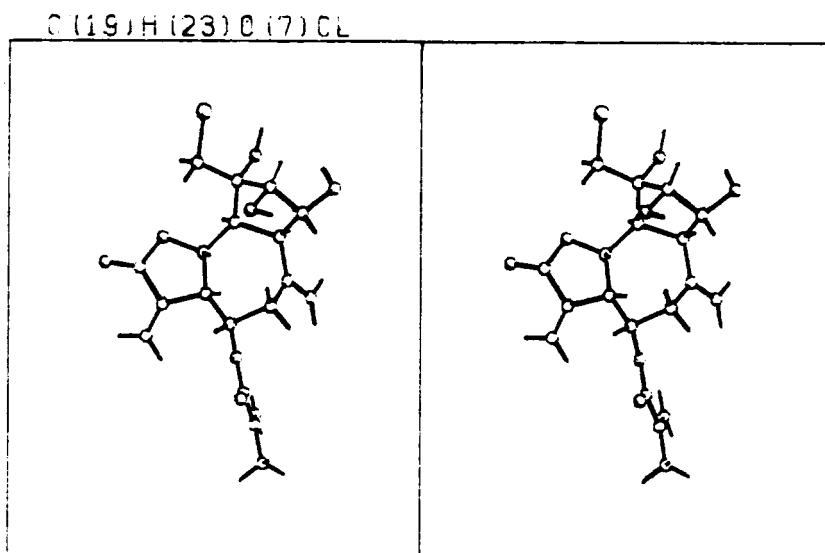


FIGURE 1. Stereoscopic view of chlororepdiolide [1]

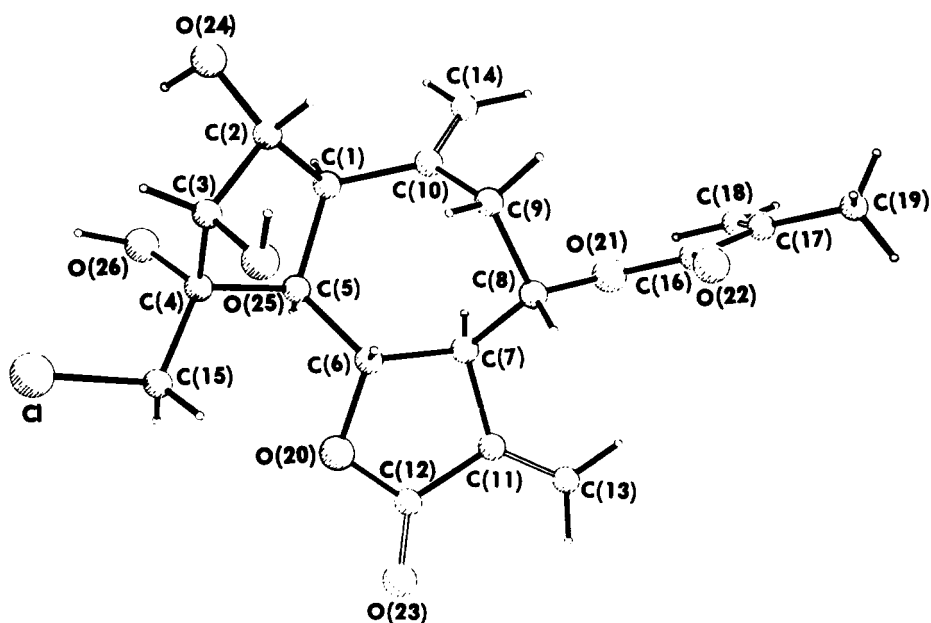


FIGURE 2. Perspective view of **1** with crystallographic numbering scheme. The open bonds represent double bonds.